

Cynomolgus IL-23 alpha&Mouse IL-12 beta Protein

Cat. No. IL2-CM1AB

Description

Source	Recombinant Cynomolgus IL-23 alpha&Mouse IL-12 beta Protein is expressed from HEK293 with His tag at the N-Terminus. It contains Val22-Pro189(Cynomolgus IL-23 alpha)&Met23-Ser335(Mouse IL-12 beta).
Accession	A0A2K5TLV4-1(Cynomolgus IL-23 alpha)&P43432-1(Mouse IL-12 beta)
Molecular Weight	The protein has a predicted MW of 19.5 (Cynomolgus IL-23 alpha)&35.8 (Mouse IL-12 beta) kDa. Due to glycosylation, the protein migrates to 22 (Cynomolgus IL23 alpha)&40-50 (Mouse IL12 beta) kDa based on Bis-Tris PAGE result.
Endotoxin	Less than 1EU per µg by the LAL method.
Purity	> 95% as determined by Bis-Tris PAGE > 95% as determined by HPLC

Formulation and Storage

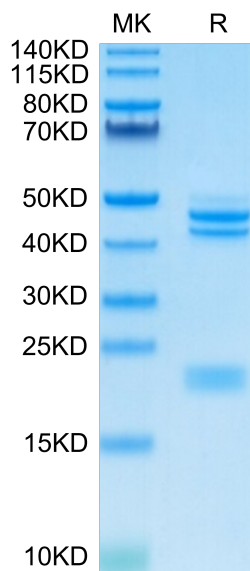
Formulation	Lyophilized from 0.22µm filtered solution in PBS (pH 7.4). Normally 8% trehalose is added as protectant before lyophilization.
Reconstitution	Centrifuge the tube before opening. Reconstituting to a concentration more than 100 µg/ml is recommended. Dissolve the lyophilized protein in distilled water.
Storage	-20 to -80°C for 12 months as supplied from date of receipt. -80°C for 3 months after reconstitution. Recommend to aliquot the protein into smaller quantities for optimal storage. Please minimize freeze-thaw cycles.

Background

Interleukin (IL)-12 and IL-23 belong to the IL-12 type family and are composite cytokines, consisting of the common β subunit p40 and the specific cytokine α subunit p35 and p19, respectively. IL-12 signals via the IL-12R β 1·IL-12R β 2 receptor complex, and IL-23 uses also IL-12R β 1 but engages IL-23R as second receptor.

Assay Data

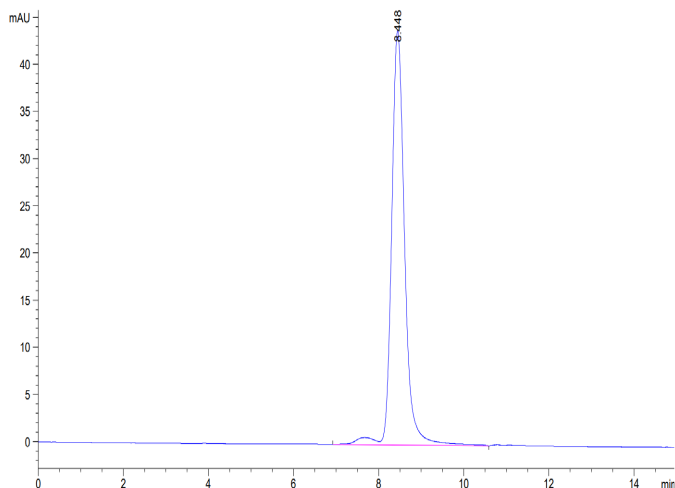
Bis-Tris PAGE



Cynomolgus IL-23 alpha&Mouse IL-12 beta on Bis-Tris PAGE under reduced condition. The purity is greater than 95%.

SEC-HPLC

Assay Data

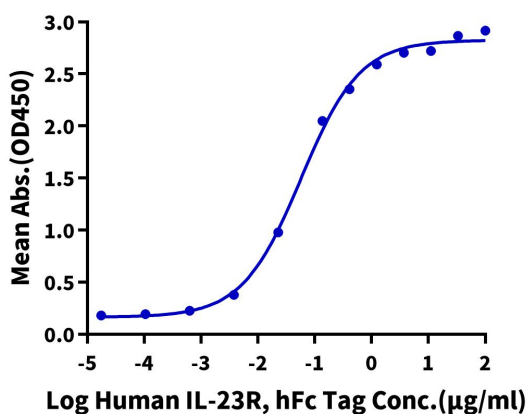


The purity of Cynomolgus IL-23 alpha&Mouse IL-12 beta is greater than 95% as determined by SEC-HPLC.

ELISA Data

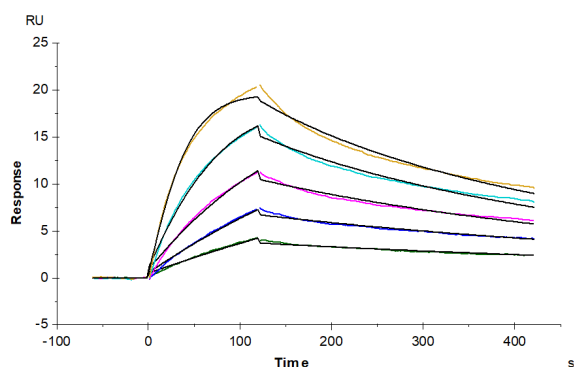
Cynomolgus IL-23 alpha&Mouse IL-12 beta, His Tag ELISA

0.2µg Cynomolgus IL-23 alpha&Mouse IL-12 beta, His Tag Per Well



Immobilized Cynomolgus IL-23 alpha&Mouse IL-12 beta, His Tag at 2µg/ml (100µl/well) on the plate. Dose response curve for Human IL-23R, hFc Tag with the EC50 of 57.5ng/ml determined by ELISA (QC Test).

SPR Data



Cynomolgus IL-23R, His Tag immobilized on CM5 Chip can bind Cynomolgus IL-23 alpha&Mouse IL-12 beta, His Tag with an affinity constant of 3.90 nM as determined in SPR assay (Biacore T200).